

# Future plans for pan-European indicators



Thomas Haußmann (Liaison Unit  
Bonn)

Bernhard Wolfslehner (EFI FE  
Team)

# C&I as key tool

FOREST EUROPE defined the pan-European concept of **Sustainable Forest Management** in 1993<sup>1</sup>.

FOREST EUROPE has led to achievements such as the internationally agreed **guidelines, criteria and indicators** for Sustainable Forest Management.

- National forest inventories as backbone
- Focusing on SFM trends
- Allow for trans-national comparability

FOREST EUROPE, together with FAO and UNECE, produces the report “**State of Europe’s Forests**” (SoEF) every five years

<sup>1</sup>Helsinki Resolution "General Guidelines for the Sustainable Management of Forests in Europe"

# Focus of new Work Programme

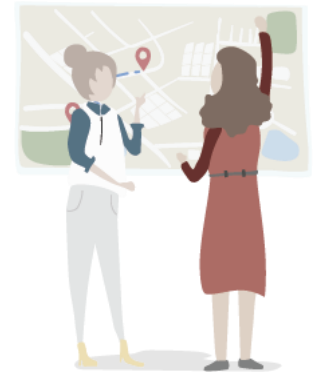
- Revisit SFM, C&I and SoEF report
  - coherence of concepts, review indicators & uptake of results
- Forest Risk Knowledge Mechanism
  - create a platform to cope with forest-related risks and prevention
- Green Jobs and Forest Education
- Rapid response
  - FE as forum to exchange on emerging, urgent issues
- Communications

# A new era for SFM

- SFM Think Tank to discuss on links to other forest-related concepts (e.g. circular bioeconomy, climate-smart, biodiversity-safe forestry) and reveal information needs
- Check C&I for their ability to answer forest questions and the requirements for additional information to create new SFM narratives
- Develop a set of key indicators that are bullet-proof
- Redesign the State of Europe Forests report around these key indicators

# A community around indicators

- Collaboration with UNECE and FAO on next joint data collection already started
  - incl. a SoEF section in the FRA database, a new interface for data providers to be developed
- Collaboration with partners such as INTEGRATE on further indicator development, e.g. in the field of biodiversity



# Outlook



- Focus on data quality and completeness for C&I
- Further develop C&I as key instrument of FOREST EUROPE
- Work closely together with other international processes to further develop the indicators
- Work on data timeliness, quality, completeness, link of terrestrial data with aerial data.....



# **Forest Europe** growing life

**Ministerial Conference on the Protection of Forests in Europe**

**foresteurope.org**



/FORESTEUROPE



@FORESTEUROPE



/company/FORESTEUROPE

Head of LUBo:

Thomas Haußmann

**thomas.haussmann@foresteurope.org**

Team leader EFI FE Team:

Dr. Bernhard Wolfslehner

**bernhard.wolfslehner@efi.int**